

# ALPHA SIGMA ALPHA



NATIONAL HEADQUARTERS

SELF-GUIDED TOUR

# WELCOME TO ALPHA SIGMA ALPHA NATIONAL HEADQUARTERS

*It is a pleasure to have you as a guest. Please use this pamphlet to guide you through the facility. If you have any questions along your tour, please feel free to ask a staff member.*

*Before you begin your tour, here is some interesting information to note about the history of Alpha Sigma Alpha's National Headquarters.*

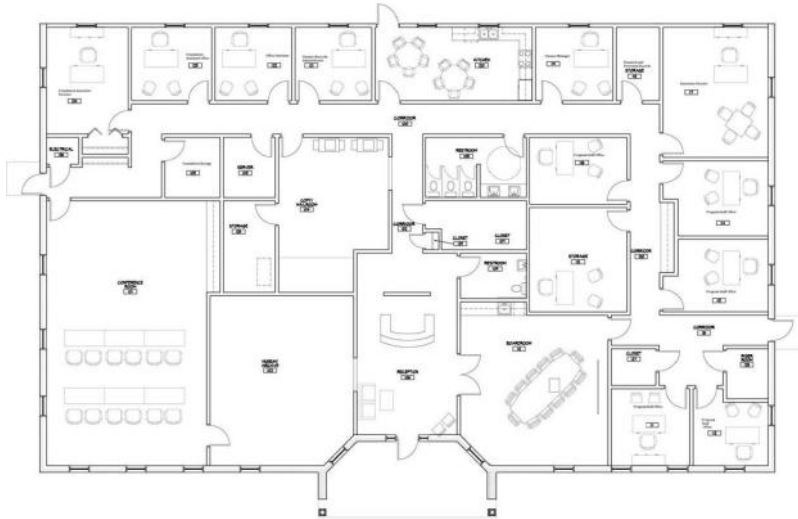
## NATIONAL HEADQUARTERS HISTORY

The first national headquarters office was located in Kenmore, NY, in three separate office buildings between the years 1952-64. The national office moved to Springfield, MO, in 1964. Initially the headquarters was located in an office building from 1964-66. The property of 1201 East Walnut was purchased in 1967 and was the national headquarters facility until 1998. In 1998 the headquarters moved to an office building on Wesleyan Road in Indianapolis. The office then moved to a suite on Zionsville Road (still in Indianapolis) in 2001. A temporary headquarters was established on Guion Road in December 2007 while the new facility was being built. The office officially moved in May 2008 to the permanent headquarters on 9002 Vincennes Circle where it is located today.

## EXECUTIVE DIRECTORS

1952-63	Central Office Executive	Jean Carmichael Vedder Richard, <b>III</b>
1963-64	Central Office Executive	Margaret Hammond Nelson, <b>III</b>
1964-66	Executive Secretary	Juanita Roberts Rowe, <b>BΣ</b>
1966-91	Headquarters Executive	Rose Marie Fellin, <b>BΣ</b>
1991-2003	Executive Director	Lisa Tait Longo, <b>ΓH</b>
2003	Interim Executive Director	Brenda Mesalam, <b>XX</b>
2003-06	Executive Director	Nancy Coffin Coleman, <b>XX</b>
2006-Current	Executive Director	Krystal Geyer Slivinski, <b>ΓP</b>

# MAP & TOUR



The tour begins outside at the front door.

While standing on the front porch look for the plaque on the right side. The plaque designates a brick that was part of the Rotunda on the campus of Longwood University in Farmville, VA. On the plaque is inscribed a poem that tells the story of how it came to be placed in our national headquarters.

Also notice the plaque on the left side of the door. This plaque was unveiled during the national headquarters dedication on Sept. 13, 2008.

As you enter the building, you will walk through a stained oak door that was sponsored by two past national presidents and their husbands:

**Dr. Rosemary Carucci Goss, BII**, National President 1984-88 and husband Robert Goss and  
**Diane Yencic James, HH**, National President 1988-92 and husband Don James

On the door is a brass plaque originally from the Chi Chi Chapter at Ball State University, IN.

# RECEPTION AREA

The reception area is filled with items that were sponsored by members and non-members. The donor plaque is located on the wall behind the reception desk. Take time to enjoy the beauty of the stained glass windows located on each side of the reception area. Look up and you will see a chandelier with narcissus flowers on it. The reception desk has custom-made artwork that was made in the shape of our badge.

Also take note of:

- The Longwood Rotunda print
- Glass sculptures of the phoenix and narcissus.
- United States flag and flags of two states– Missouri to represent where Alpha Sigma Alpha is incorporated and Indiana where our headquarters is located.

# ARCHIVES MUSEUM

To the left of the reception area is the museum. The shelves are numbered 1-35 starting at the far side of the room working top to bottom, left to right.

**Shelf #1:** Books belonging to Wilma Wilson Sharp

**Shelf #2:** Red glass belonging to Wilma Wilson Sharp, Zeta Zeta Chapter composite picture with Wilma Wilson Sharp in the bottom left picture, picture of Wilma Wilson Sharp, copy of the Creed written by Wilma Wilson Sharp

**Shelf #3:** Items belonging to Wilma Wilson Sharp

**Shelf #4:** Wilma Wilson Sharp's high school diploma (her diploma from college is hanging in the board room), scrapbook and other items from Wilma Wilson Sharp

**Shelf #5:** Books belonging to Wilma Wilson Sharp

**Shelf #6:** Pewter tableware belonging to Wilma Wilson Sharp

**Shelf #7:** Some of Wilma Wilson Sharp's jewelry, pictures of Wilma Wilson Sharp and other items belonging to Wilma Wilson Sharp

**Shelf #8:** Two jewelry displays , a photo of Elva Doyle Reed– national Secretary 1914-1916 and a photo from the early 1900s

**Shelf #9:** Membership certificates of Emma Coleman Frost and Rose Marie Fellin. The certificate of Elberta Patterson is signed by Ida Shaw Martin. Also on the shelf is a picture of Ida Shaw Martin and black "ΑΣΑ" letters that originally hung on the front of the national headquarters located in Springfield, MO.

**Shelf #10:** Belt display from Alpha Chapter with supporting documentation, ΑΣΑ plate and the Wilma Wilson Sharp Award given to Emma Coleman Frost in 1945

**Shelf #11:** This shelf is dedicated to Sidney Gremillion Allen, Alpha Sigma Alpha's only member to hold the National Panhellenic Conference chairman position.

**Shelf #12:** Pictures of S. June Smith and Frieda Riley

**Shelf #13:** Alpha Alpha Charter, symbolism book and red glass pitcher

**Shelf #14:** Pictures of Alpha Sigma Alpha's five Founders, the sorority charter, brick from the Longwood Rotunda, drawing of the clock donated by the Farmville Four located on Longwood University's campus

**Shelf #15:** Alpha Beta composite circa 1918-20 and early copies of the Ritual book

**Shelf #16:** Red pillow, painting of the crest and silver engraved punch bowl

**Shelf #17-18:** Display of ritual gongs and bells, jewelry display and information on the history of Delta Sigma Chi

**Shelf #19:** Jewelry display and songbook display

**Shelf #20:** Jacket from the Beta Kappa Chapter, leather vest with crest and a glass pitcher

**Shelf #21:** Virginia license plate, red beanie from Chi Chi Chapter, and other ΑΣΑ items

**Shelf #22:** Psi Psi voting box, Beta Phi gavel box, display of pledge manuals

**Shelf #23:** ΑΣΑ memorabilia and Psi Psi membership cards in box

**Shelf #24:** Sketch of the centennial convention stage and centennial convention memorabilia

**Shelf #25:** Centennial convention picture taken at Longwood University, picture from the 2008 national convention in Albuquerque, 1982 convention tote

**Shelf #26:** Convention favors and program. In the jewelry box is Helen Corey's bracelet that the national council gave to her in 1972. The bracelet has 11 charms –one for each of the national conventions she chaired. The additional charms representing conventions that Helen Corey attended were added later. Also in the box is Betty Wallick's bracelet of convention charms and NPC charms. The pearl bracelet was a 1961 convention favor, Also on the shelf is a red leather note pad belonging to Betty Wallick from the Estes Park convention in 1946. The small silver Jefferson Cup was a 1976 convention favor. The metal stamp is of the 1910 convention pin (see actual pin on shelf #19).

**Shelf #27:** Golden anniversary album, centennial anniversary CD, engraved box for silverware, brass door knocker from Beta Zeta Chapter, and an old scrapbook from Iota Iota Chapter

**Shelf #28:** Phoenix crest painted on leather and *Phoenix* magazine covers

**Shelf #29-30:** Bound volumes of the *Phoenix* magazine, copies of the *Aegis* and stamps from the *Phoenix* magazine

**Shelf # 31:** Chapter scrapbooks and Alpha Sigma Alpha cookbooks, bound copies of the *Aegis* (in black binders)

**Shelf # 32:** Display of our Springfield, MO, National Headquarters, signature stamps of past executive directors– Juanita Rowe and Rosie Fellin, silver bowl that was a gift to national headquarters from Wilma Wilson Sharp in 1986, copy of a certificate of good standing from the state of Missouri and the Indianapolis proclamation of "Alpha Sigma Alpha Day"

**Shelf #33:** Metal letters that were originally on the sign of the national headquarters located in Springfield, MO

**Shelf #34:** Display of crests and symbols, copy of the 1977 trademark certificate, black album of pictures from the Springfield, MO, National Headquarters

**Shelf #35:** Metal letters that were originally on the sign of the national headquarters located in Springfield, MO, picture of the headquarters sign in Springfield, MO, and the groundbreaking shovel and groundbreaking picture from June 2007

Also in the museum please take note of the following:

- Past executive director desk with typewriter on which national convention minutes were taken during the 1930's. Also on the desk are books by **AΣA** authors, signature stamps of notable people and a crest stamp used for letterhead.
- Past Presidents' Photo Gallery
- Past Executive Directors' Photo Gallery
- Commissioned print of Wilma Wilson Sharp
- Photograph of the 1930 convention when Wilma Wilson Sharp became National President
- Crest rug
- Wilma Wilson Sharp's desk with her bible. Also on this desk is a picture of Mrs. Sharp from the Diamond Jubilee Convention in Williamsburg, VA, sent as a gift to national headquarters in 1976.
- Picture of Hattie Kelly Thomas, Alpha Sigma Alpha's first initiate

## BOARD ROOM

To the right of the reception area is the board room. Notice the board room table that was custom made for Alpha Sigma Alpha. Travel around the room to see the artwork on the walls which include Wilma Wilson Sharp's diploma from Central Missouri State Teachers College (now the University of Central Missouri), a picture of the 1926, 1932 and 1952 (Golden Anniversary) conventions, a collage of our Founders, an early photograph from the Gamma Gamma Chapter at Northwest Oklahoma State Normal School (now Northwest Oklahoma State University), and Wilma Wilson Sharp's badge.

Leaving the board room follow the map to visit the staff offices.

## STAFF OFFICES

- **Membership development coordinator office and resource room** – Sponsored by Kim Benson, **ΔN**
- **Leadership consultant office** – Notice the donor plaque that lists past consultants who donated money for the office furnishings.
- **Leadership development & event coordinator office**
- **Membership growth coordinator office**
- **Communications & marketing coordinator office**- Sponsored by Dolly Loyd, **BA**
- **Executive director office**- Sponsored by Nora Ten Broeck, **BK** and Robert Ten Broeck in memory of Margaret Ten Broeck, **BK**.
- **Finance manager office**- Sponsored by Angela Bauldree, **BZ**

# STAFF COMMON AREAS

After you pass the **finance manager's offices** you will notice restrooms on the left.

You will then pass the kitchen (on right).

Across from the kitchen is the hallway that leads back to the front reception area.

Keep traveling past the kitchen and you will pass the **mailroom** (on left) and **server room** (on left).

On the right there are a few more staff offices:

First is the **volunteer & alumnae coordinator office** and then the office for the **office assistant**.

# THE ΑΣΑ FOUNDATION

At the end of the hallway you will reach two offices that are occupied by the Alpha Sigma Alpha Foundation. The Foundation has its own staff which includes the Foundation assistant and the Foundation executive director. The Foundation rents the office space from the national sorority.

# CONFERENCE ROOM

When you reach the end of the hallway, turn left and you will be in the **conference room**. This room is able to hold volunteer trainings and is available for chapter retreats. At the front of the room is the Alpha Sigma Alpha flag and the National Panhellenic Conference flag.

Walking through the conference room will lead you to the museum and reception area.

# THANK YOU...

...for touring the Alpha Sigma Alpha National Headquarters! Don't forget to sign our guest book at the front desk before you leave.

# THE HEADQUARTERS PROPERTY

If the weather is nice, feel free to walk outside the building, noticing the different gardens sponsored by members. If you are visiting during the right season you may see the sorority flowers (Spring-Narcissus/Daffodil and Fall-Aster).

## ASTER & NARCISSUS GARDEN

In the front of the building, you will notice a lamp post. The lamp post was sponsored by the Buffalo Alumnae Chapter in honor of the women who worked at our first national headquarters in Kenmore, NY. The front garden is the Aster and Narcissus Garden. Over 200 narcissus bulbs are planted in the front flower beds.

## FOUNDERS' MEMORIAL GARDEN

In the back of the building you will see the Founders' Memorial Garden sponsored by past and present Foundation board of trustee members. The garden includes a sign pointing to Farmville, VA, which was sponsored by Alpha Chapter. You will also see sponsored memorial benches. Each bench has a line of our Creed engraved on it.

## WILDLIFE AREA

Looking out into the field beyond the garden, you will notice wooden posts with signs. These signs designate that area as a certified wildlife habitat through the National Wildlife Federation. This area is a little less than two acres and has a small stream (Payne Branch) running through the woods. The Payne Branch eventually flows into the White River that runs through downtown Indianapolis.

Wildlife that has been seen on our property:

- Coyote (affectionately named "Alphie")
- White-tailed deer
- Opossum
- Raccoon
- Numerous birds

If you are a wildlife enthusiast, please talk to Krystal Slivinski, executive director, for a detailed listing of the wildlife on the property.



# HEADQUARTERS CONSTRUCTION

## TIMELINE

1999	Purchased land with the proceeds from the sale of the headquarters in Springfield, MO
2000-06	Financial stability work
2006	Initial meeting of facility project team (Marianne Busch Bullock, <b>BO</b> , Lori White Scott, <b>EE</b> , Kim Benson, <b>ΔN</b> , Krystal Geyer Slivinski, <b>ΓP</b> ) for bidding and financial preparation
Dec. 2006	Bidding process began for architect firm
Feb. 2007	Selection of Cripe Architects + Engineers and Browning Construction, Inc to design and build the national headquarters facility
June 23, 2007	Ceremonial groundbreaking during Extreme Leader Weekend
July 2007	Final contract signed between Browning Construction, Inc. and Alpha Sigma Alpha
July 2007	Final approval of design
Sept. 2007	Construction loan signed with National City Bank
Sept. 2007	Key Campaign began
	Foundation poured
	Framework up
	Roof trusses up
	Staff field trip to sign the framework
	Brick up
	Interior work began
April 2008	Interior punch list (Kim Benson and Krystal Slivinski)
	Driveway paved
	Signage installed
	Temporary Certificate of Occupancy given
	Landscaping completed
May 2008	Final Certificate of Occupancy given
May 7 & 8, 2008	Move-in day



*Photo of the groundbreaking. Bottom row: Nora Ten Broeck, Christine Thomas and Cindy Kelley. Top row: Lori Scott, Kim Benson, Krystal Slivinski and Dolly Loyd.*

**Initial ground work in Sep. 2007**



**Footings in preparation of the foundation**

**Framing**



**National Headquarters and Foundation staff field trip to the site in September 2007.**



**Initial walls**



**Trusses up**



**Brick laying begins**



**Full enclosure**



**Alpha Sigma Alpha National Headquarters!**





ALPHA SIGMA ALPHA NATIONAL HEADQUARTERS  
9002 VINCENNES CIRCLE  
INDIANAPOLIS, IN 46268  
[ASA@ALPHASIGMAALPHA.ORG](mailto:ASA@ALPHASIGMAALPHA.ORG)  
PHONE: (317) 871-2920 Fax: (317) 871-2924

*Self Guided Tour Booklet created by Krystal Slivinski, ΓΨ*